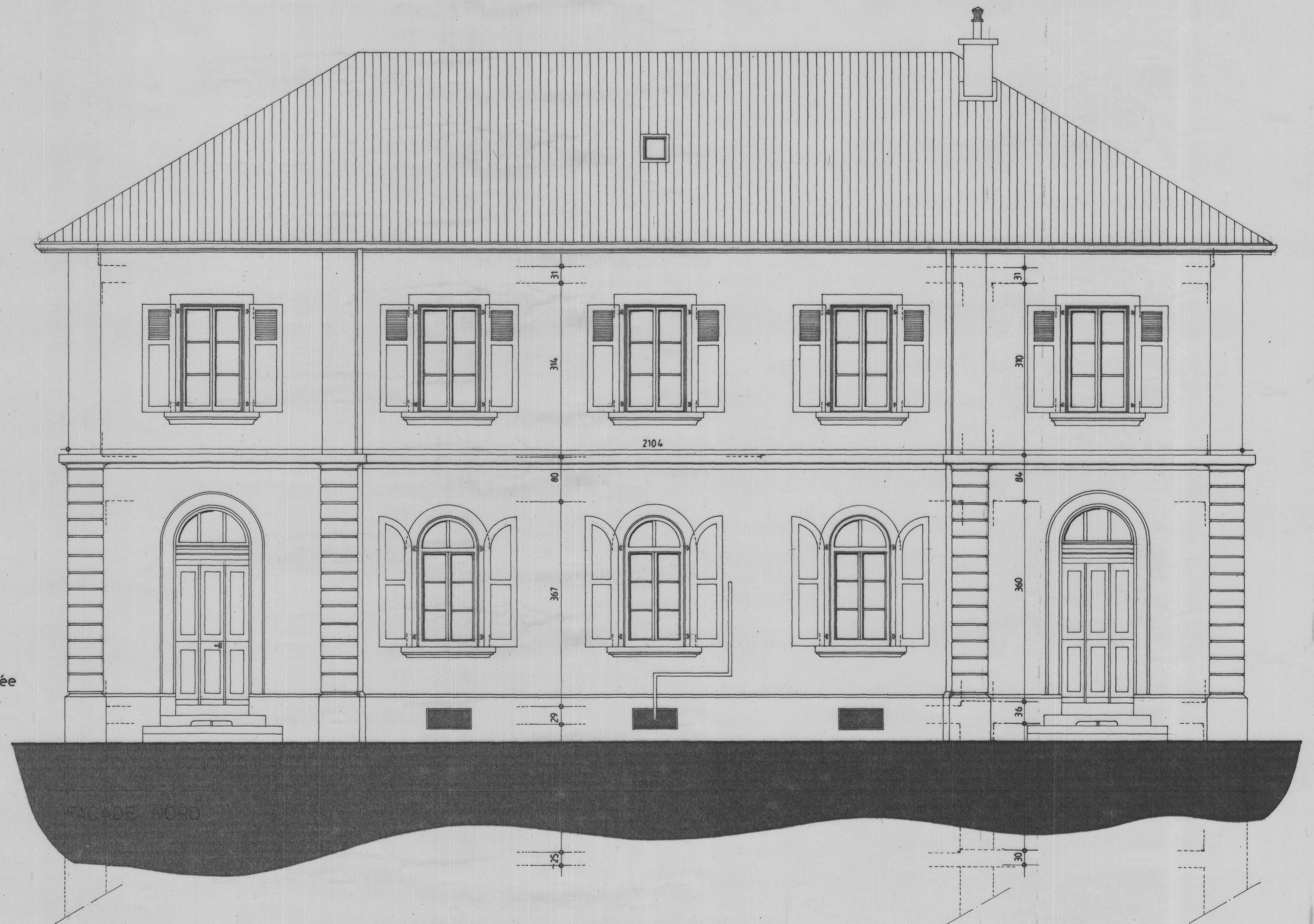
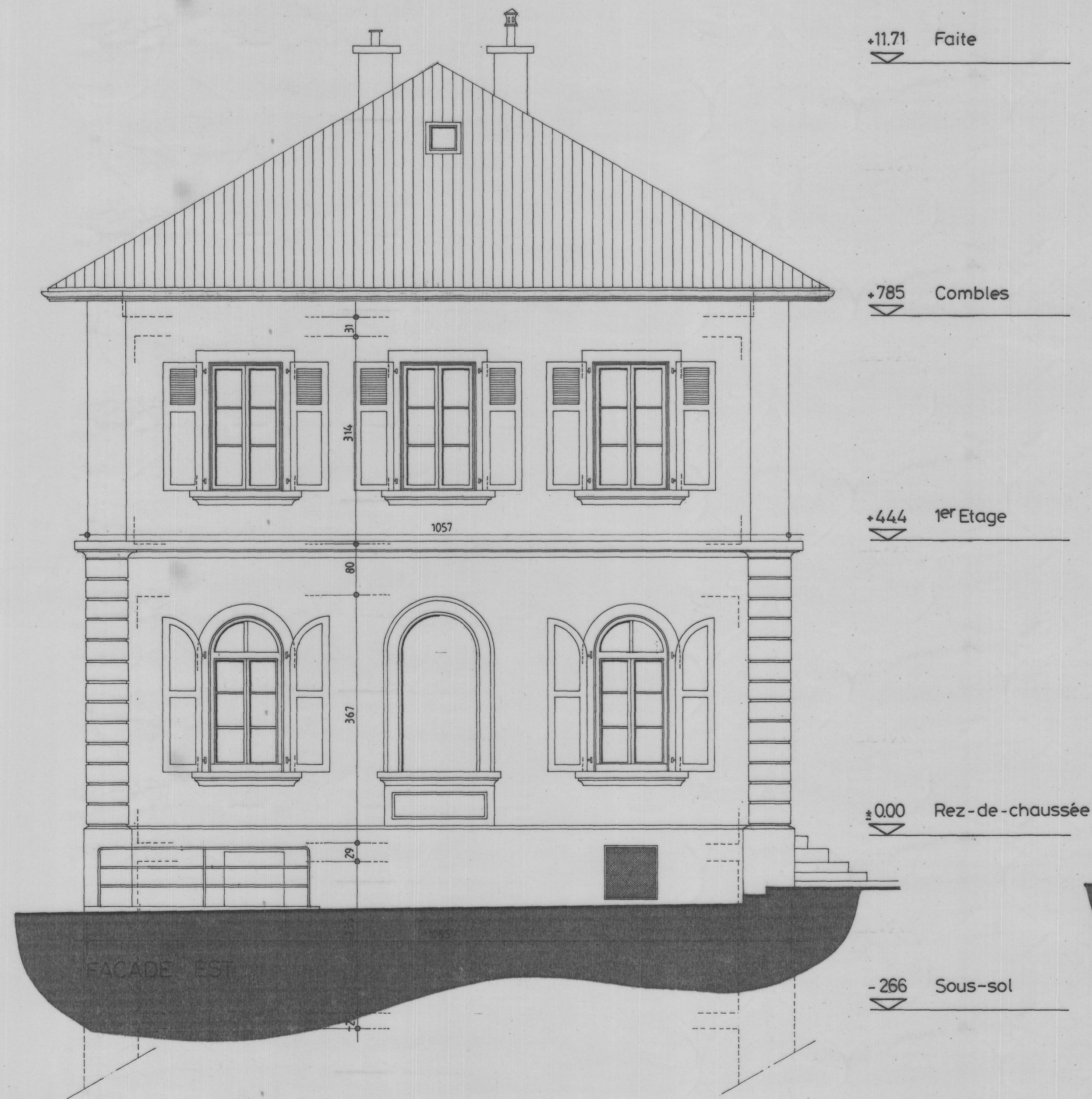


258.5 Immeuble de L'ATHENEE AV. DE CORSIER 19

ECHELLE: 1:50
DESSINE: 27.08.1994
MODIFIE:

ETAT EXISTANT
FACADES EST ET NORD
COMMUNE DE VEVEY DIRECTION DE L'URBANISME



110-101
p. amb.
top.
+ ca.
litree